


GRAND ELYSEE
HAMBURG



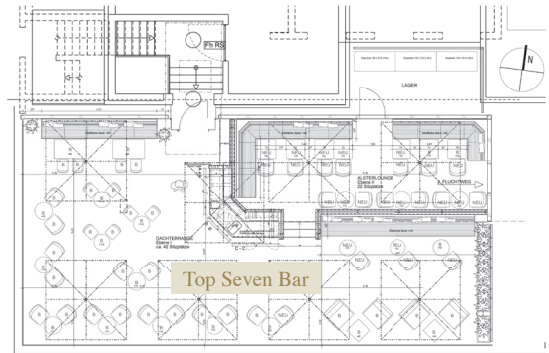
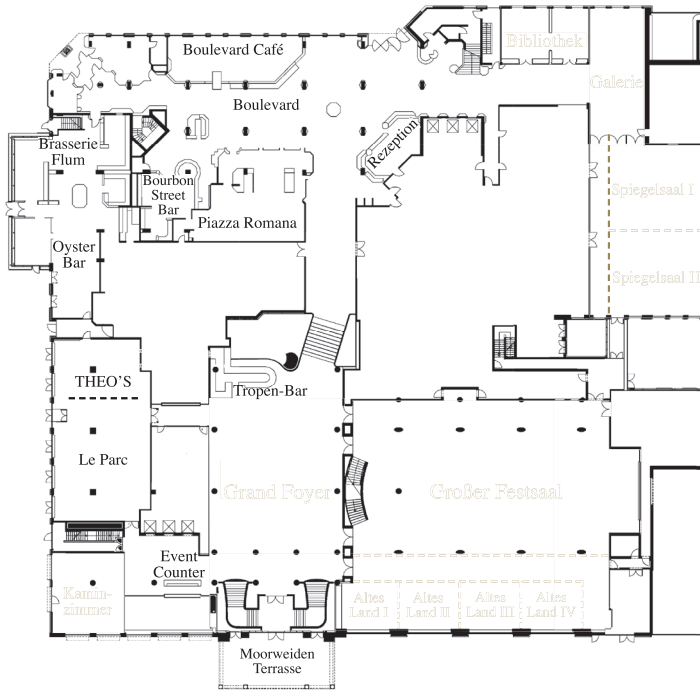
30 VARIED EVENT ROOMS
OVER AN AREA OF 4,200 SQUARE METRES



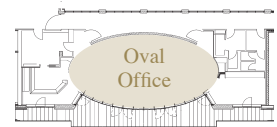
- Capacity for up to 1,200 persons
- Northern Germany's largest ballroom with its own foyer and direct, ground-level delivery
- Nine-metre ceiling height in the ballroom, with ceiling hanging points
- 16 million colour shades for individual lighting designs in the ballroom
- Three spaces accessible by car of a total of 1,200 m²
- Oval Office on the sixth floor, with its own bar, kitchen and terrace
- In-house and state-of-the-art event technology
- High-speed WiFi (individual networks available)
- Balanced and varied buffet options and the finest gala menus



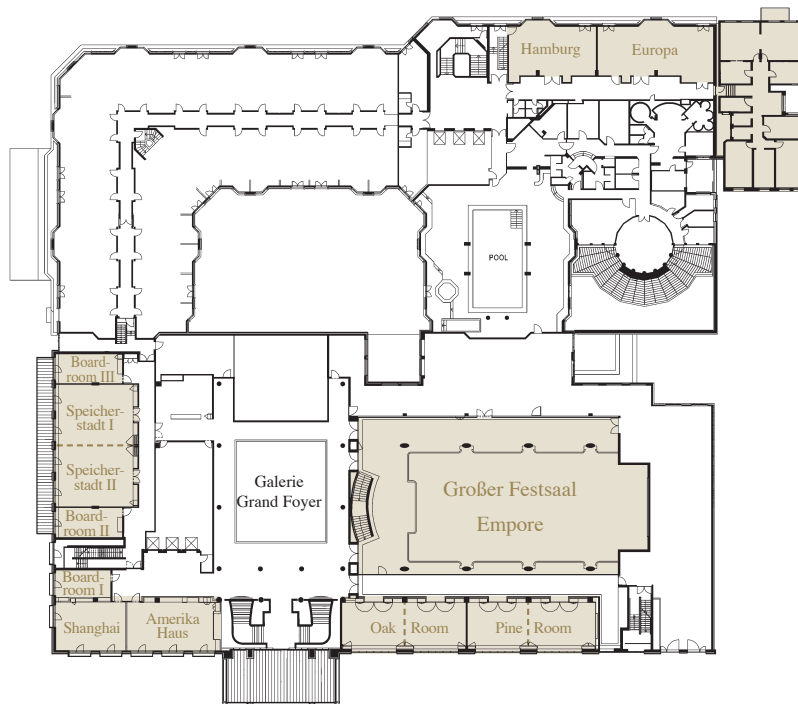
FLOOR PLAN - GROUND FLOOR AND 6TH FLOOR



6th floor



FLOOR PLAN - 1ST FLOOR



Rooms in
VILLA CHRISTINA
Dammtor
Moorweide
Rotherbaum
Pöseldorf

FACT SHEET - EVENT AND CONFERENCE ROOMS

Room	Area m ²	Width x length m	Height m	Boardroom	U-shape	Classroom	Theatre	Banquet	Lounge	Natural light
Großer Festsaal	732	38.50 x 22.70	9.00	96 pers.	80 pers.	357 pers.	600 pers.	459 pers.	650 pers.	–
Grand Foyer	462	36.50 x 19.00	9.00	–	–	–	–	–	500 pers.	✓
Großer Festsaal 1st floor, total (incl. walkway and Altes Land I-IV)	1078	39.90 x 33.00	9.00	–	–	453 pers.	800 pers.	693 pers..	900 pers.	✓
Altes Land I	52	7.00 x 7.70	3.00	18 pers.	15 pers.	18 pers.	35 pers.	36 pers.	40 pers.	✓
Altes Land II	55	7.00 x 8.20	3.00	18 pers.	15 pers.	18 pers.	35 pers.	36 pers.	40 pers.	✓
Altes Land III	55	7.00 x 8.20	3.00	18 pers.	15 pers.	18 pers.	35 pers.	36 pers.	40 pers.	✓
Altes Land IV	55	7.00 x 8.20	3.00	18 pers.	15 pers.	18 pers.	35 pers.	36 pers.	40 pers.	✓
Altes Land I-IV	217	7.00 x 32.30	3.00	–	–	96 pers.	160 pers.	144 pers.	180 pers.	✓
Spiegelsaal I	151	12.00 x 13.00	2.90	42 pers.	33 pers.	45 pers.	90 Pers.	72 pers.	110 pers.	✓
Spiegelsaal II	143	13.00 x 11.00	2.90	42 pers.	33 pers.	45 pers.	90 Pers.	72 pers.	110 pers.	✓
Spiegelsaal I & II	350	15.40 x 23.00	2.90	78 pers.	63 pers.	200 pers.	280 Pers.	234 pers.	350 pers.	✓
Galerie	207	21.00 x 18.00	2.80	–	–	–	–	–	200 pers.	✓
Bibliothek	74	7.30 x 11.30	3.30	20 pers.	18 pers.	18 pers.	30 pers.	45 pers.	60 pers.	✓
Kaminzimmer	27	6.00 x 4.50	3.00	10 pers.	–	–	–	–	–	✓

Room	Area m ²	Width x length m	Height m	Boardroom	U-shape	Theatre	Oval	Banquet	Lounge	Natural light
Oval Office	112	7.50 x 24.00	4.00	–	–	50	34	54	80 pers.	✓

Room	Area m ²	Width x length m	Height m	Boardroom	U-shape	Classroom	Theatre	Bankett	Lounge	Natural light
Europa	96	7.20 x 15.50	2.60	42 pers.	39 pers.	48 pers.	80 pers.	72 pers.	90 pers.	✓
Hamburg	73	7.20 x 11.50	2.60	30 pers.	27 pers.	33 pers.	50 pers.	54 pers.	60 pers.	✓
Pine Room (divisible)	110	7.00 x 17.20	2.70	42 pers.	39 pers.	48 pers.	80 pers.	72 pers.	90 pers.	✓
Oak Room (divisible)	104	7.00 x 16.50	2.70	42 pers.	39 pers.	48 pers.	80 pers.	72 pers.	90 pers.	✓
Amerika Haus	80	7.20 x 11.80	2.80	30 pers.	27 pers.	33 pers.	50 pers.	54 pers.	70 pers.	✓
Shanghai	62	7.20 x 9.50	2.70	24 pers.	21 pers.	27 pers.	40 pers.	36 pers.	50 pers.	✓
Speicherstadt I	85	11.50 x 8.00	2.70	30 pers.	24 pers.	45 pers.	70 pers.	54 pers.	70 pers.	✓
Speicherstadt II	86	11.50 x 8.00	2.70	30 pers.	24 pers.	45 pers.	70 pers.	54 pers.	70 pers.	✓
Speicherstadt I & II	171	11.50 x 16.00	2.70	–	–	90 pers.	140 pers.	108 pers.	140 pers.	✓
Boardroom I	28	4.10 x 7.60	2.70	10 pers.	–	–	–	–	–	✓
Boardroom II	32	3.90 x 8.40	2.70	10 pers.	–	–	–	–	–	✓
Boardroom III	34	3.90 x 9.10	2.70	10 pers.	–	–	–	–	–	✓
Dammtor	21	6.00 x 3.50	3.60	10 pers.	–	–	–	–	–	✓
Moorweide	22	6.00 x 3.50	3.60	10 pers.	–	–	–	–	–	✓
Rotherbaum	29	5.40 x 5.40	3.60	12 pers.	9 pers.	18 pers.	20 pers.	10 pers.	20 pers.	✓
Pöseldorf	29	5.40 x 5.40	3.60	12 pers.	9 pers.	18 pers.	20 pers.	10 pers.	20 pers.	✓



UNIQUE VARIETY AND EXCELLENT SERVICE

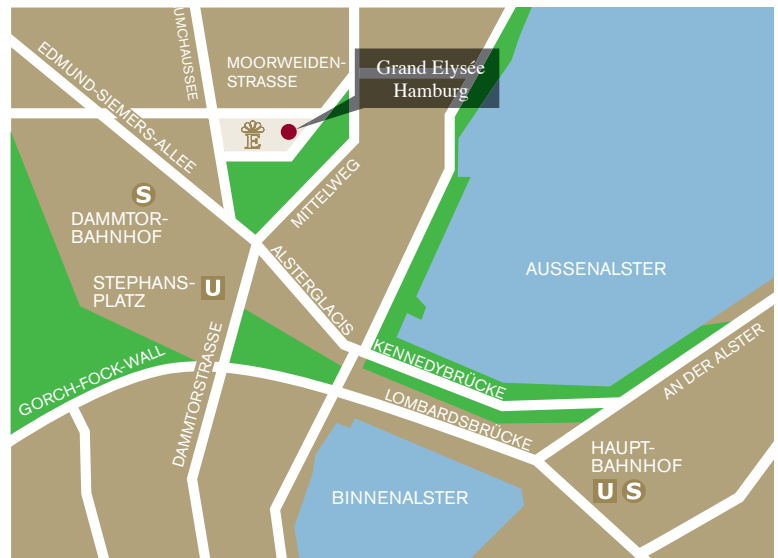


HOTEL OVERVIEW

- Germany's largest privately-run 5-star hotel
- 510 rooms and suites
- A range of culinary specialities in four international restaurants, a café and two bars
- 'Top Seven' roof terrace with a breath-taking view of the Hamburg skyline
- Elyseum Wellness & Spa on over 1,000 m²
- Hotel underground carpark with 500 spaces
- Free high-speed WiFi

THE HEART OF THE HANSEATIC CITY

- Airport only 20 minutes away by car
- 5-minute walk from the Dammtor Bahnhof railway station
- Hamburg city centre, exhibition halls und Congress Center Hamburg 10 minutes' walk away




GRAND ELYSÉE
 HAMBURG

Grand Elysée Hamburg | Rothenbaumchaussee 10 | 20148 Hamburg | T 040 41 41 2 - 888 | F 040 41 41 2 - 779
 events@grand-elysee.com | www.grand-elysee.com